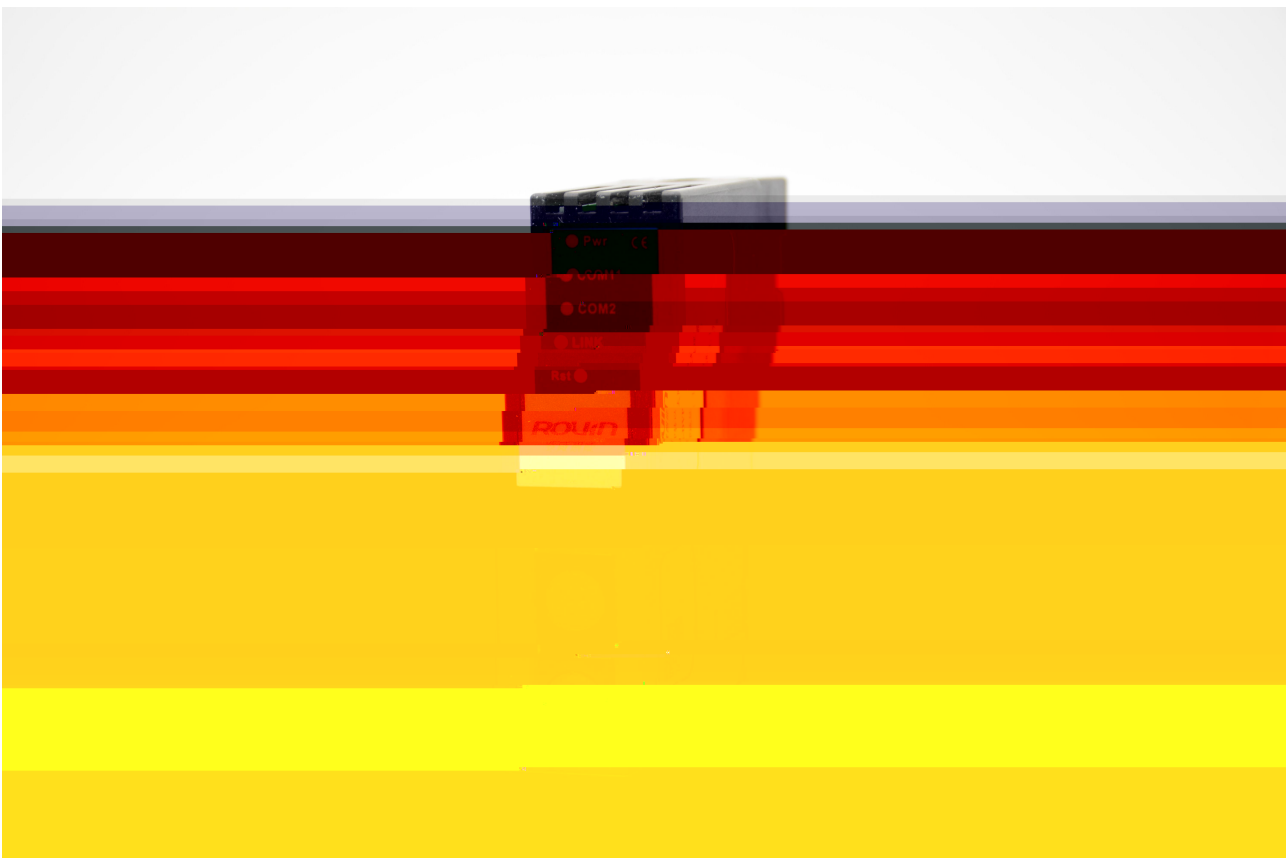

ROUIN

DVP PLC



1.1

RVNet-DVP

DVP-ES/ES2/EX2/EC3/EH3 DVP-SV2/SS2/SA/SX2 DVP-10PM/20PM

PLC

RVNet-DVP

PLC
X2 PLC

/

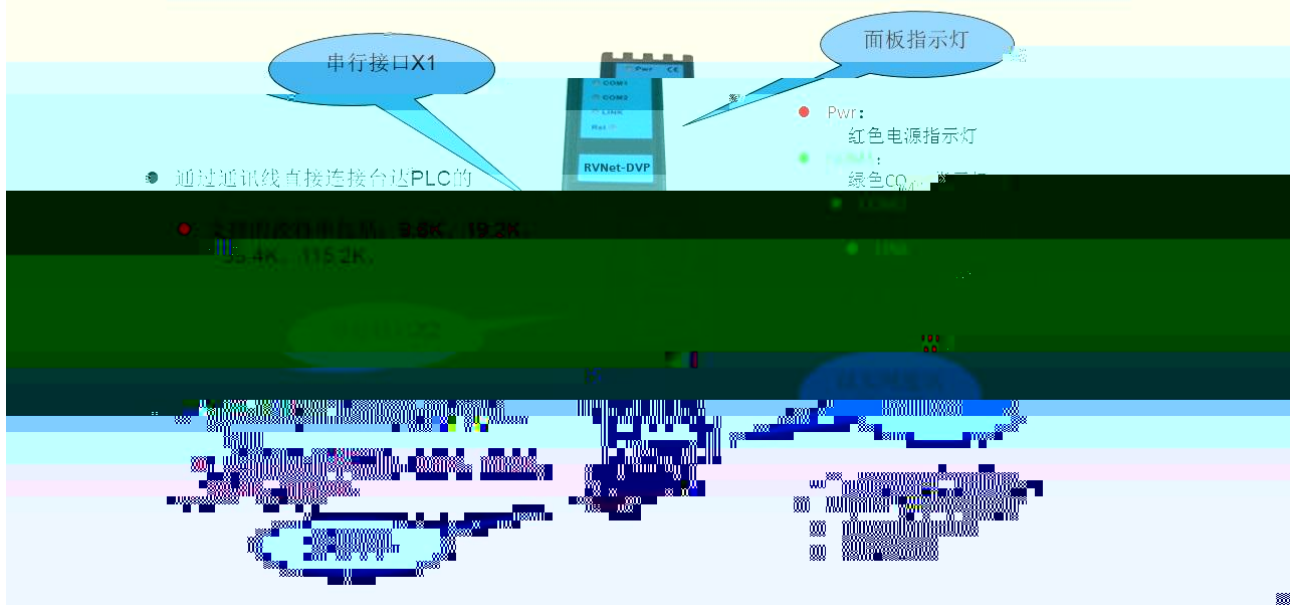
PLC

1.2

1	35mm	COM	DVP	MD8		COM2
	RVNet-DVP	PLC			24VDC	
2	WEB					
3	PLC	HMI				
4		WPLSoft	I	SPSoft		/

2.1

RVNet-DVP产品的硬件和接口图



2.2



2.3

231 XI

232 X2

233 X3

234 24VDC X4

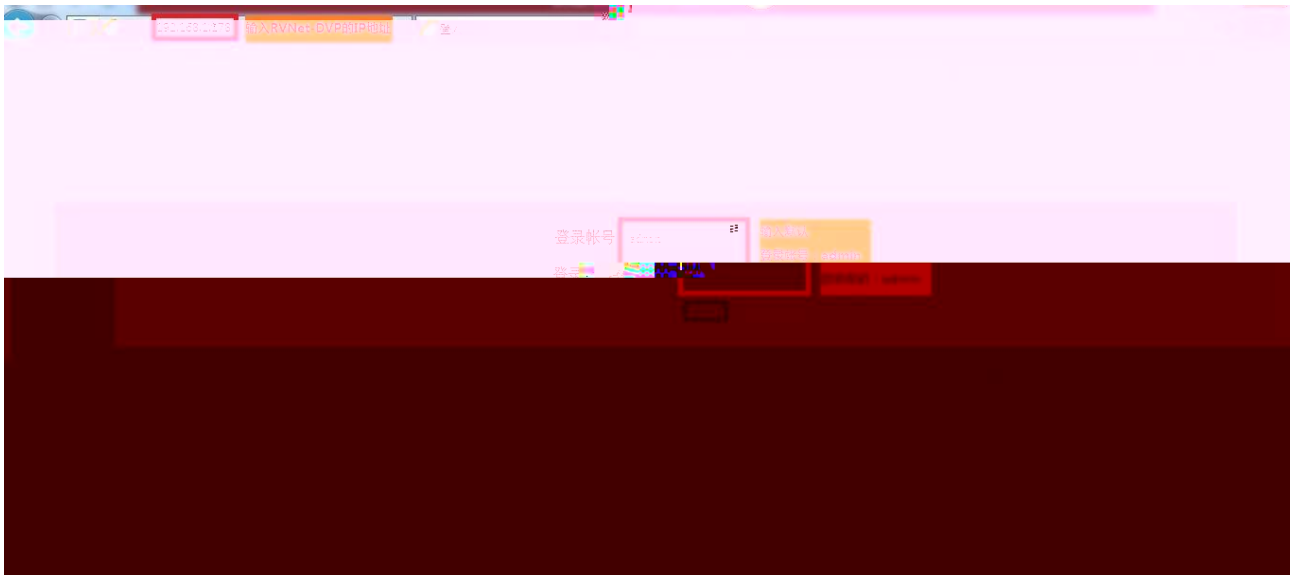
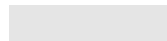
24 d b

wá

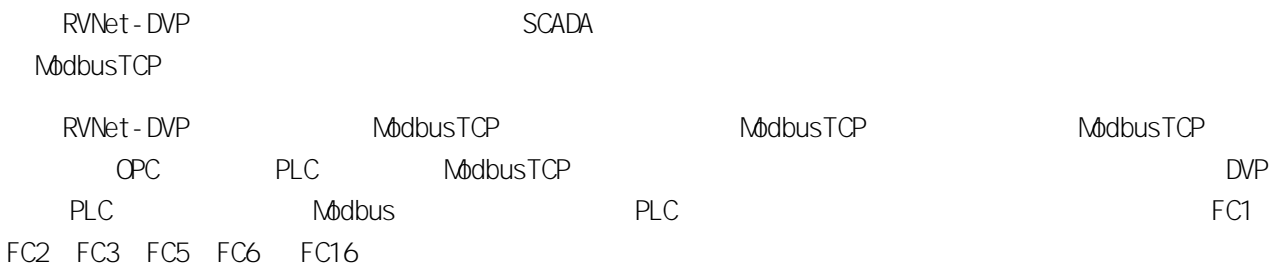
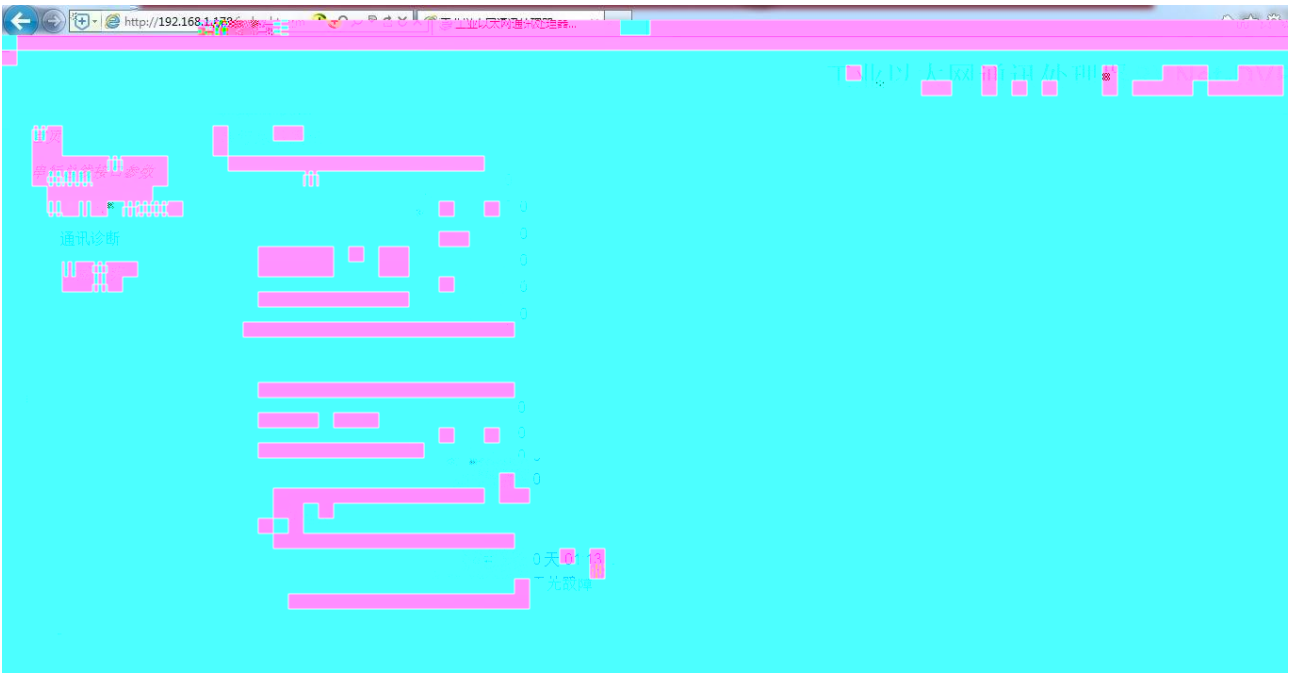
b	+K	Bo	Key	£	@

R

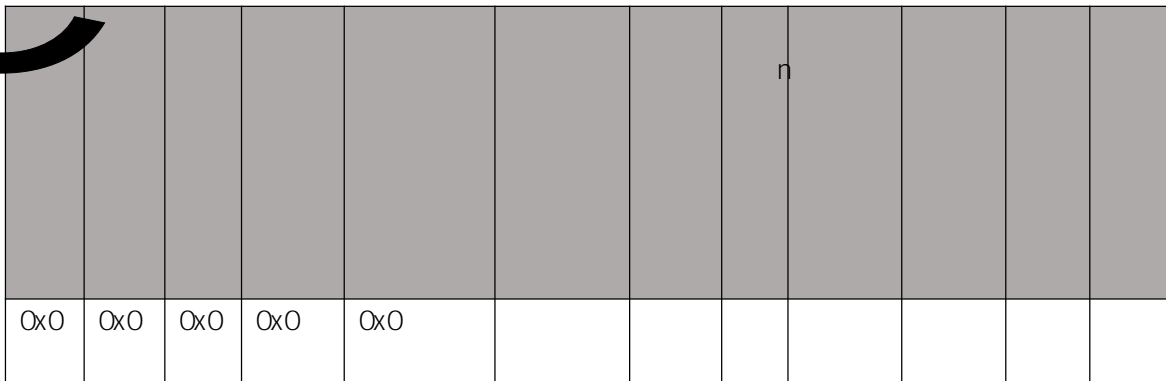
"



3.2.3



ModbusTCP



1



PLC PLC Modbus Modbus
 Modbus

2 ModScan32

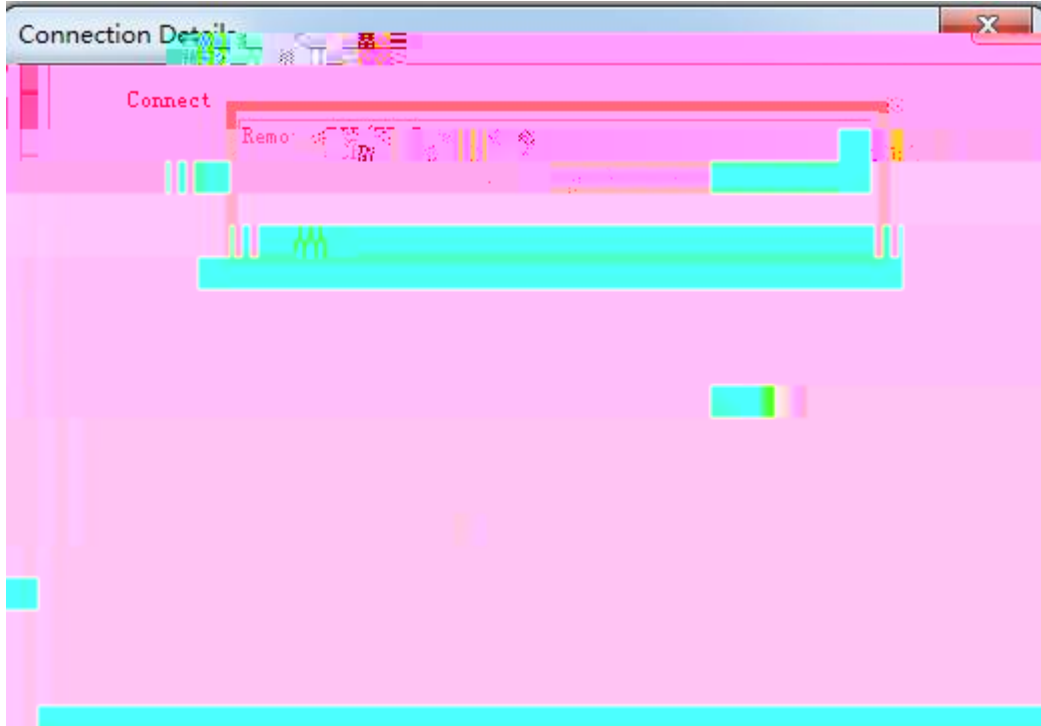
\ \

modscan2_cr.rar



1. ModScan32

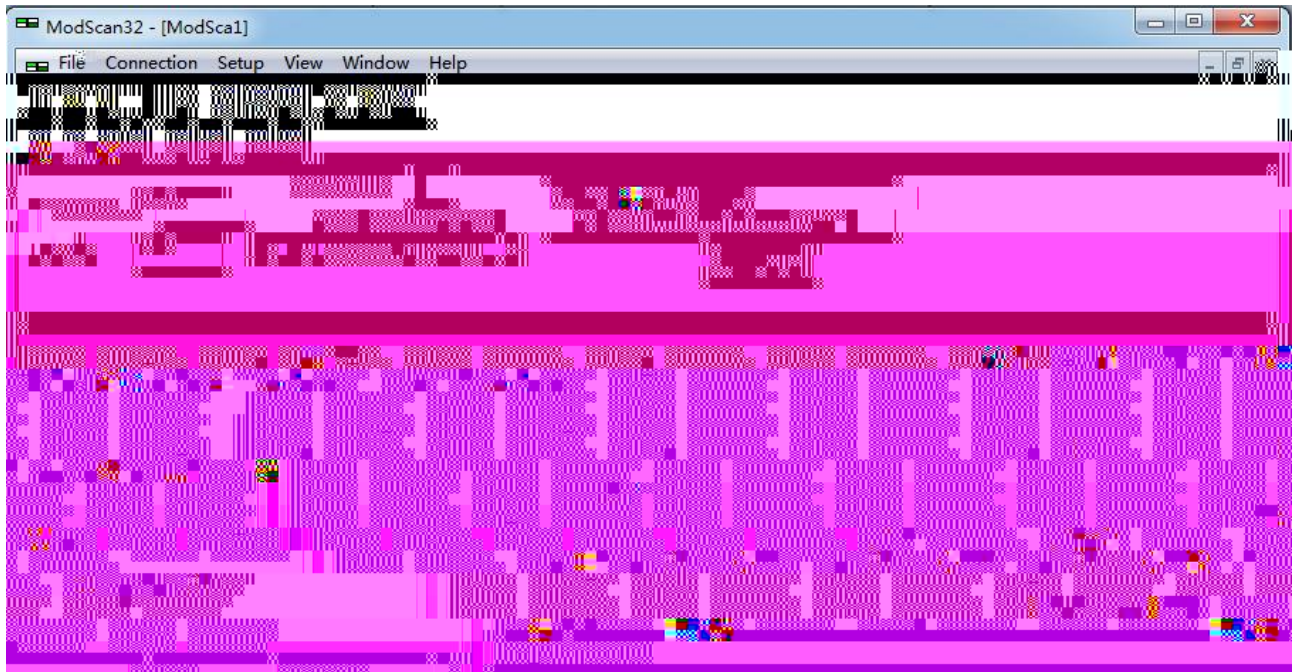
2. Connection/Connect Remote TCP/IP Server RVNet-DVP IP Service
502 [OK] 1

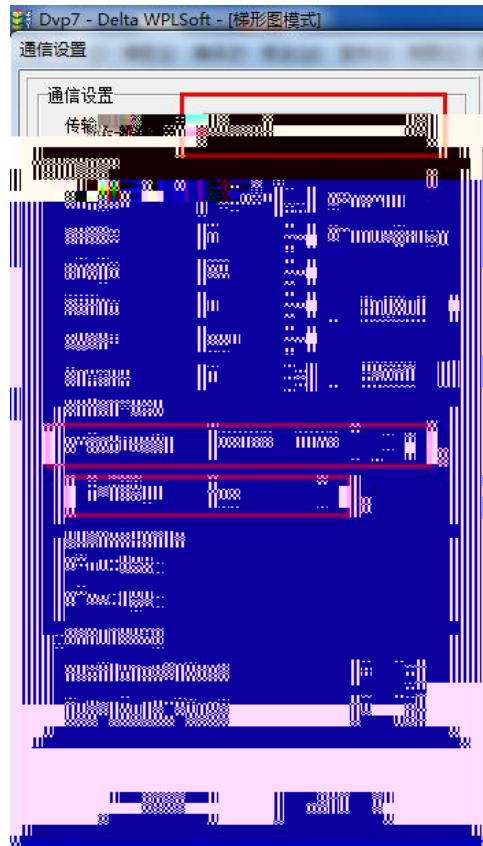


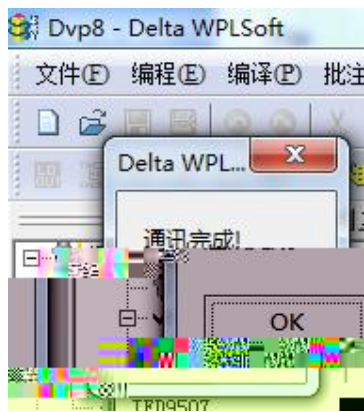
1

3. "ModSca1" Device ID PLC 1 03: HOLDING REGISTER
Address = 0001 Length = 100

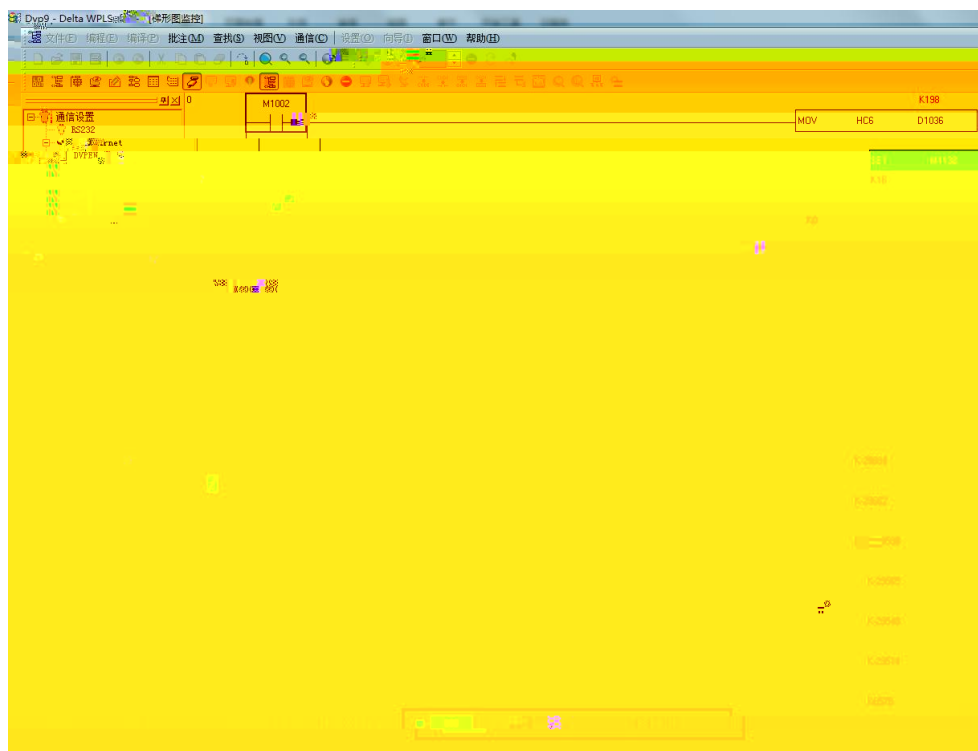
4. 2 404097 404196 16 DVP PLC D0 D100







4.



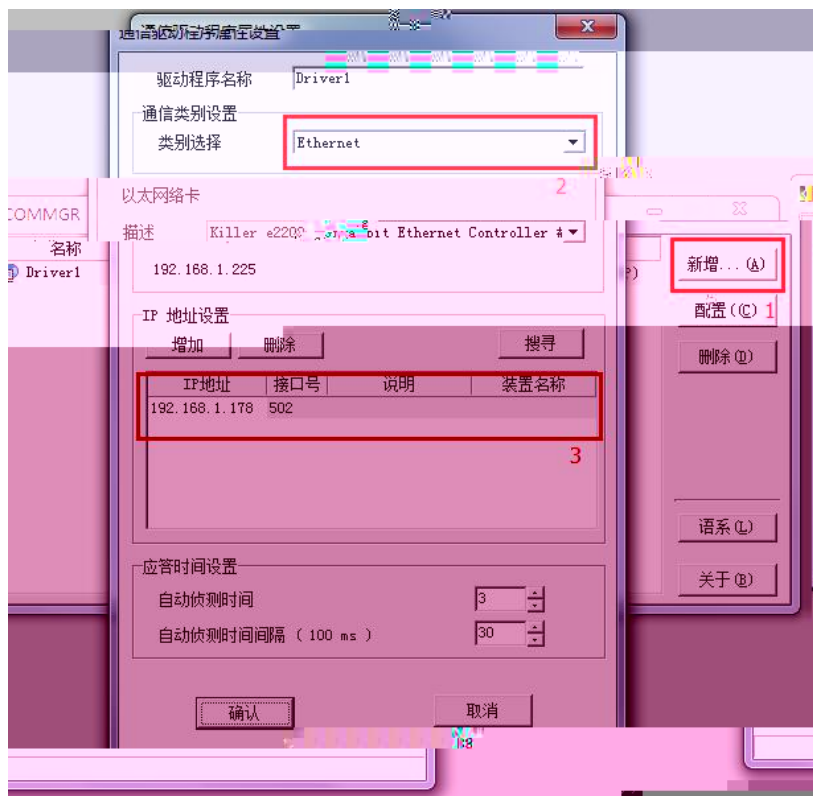
4. 1. 2

ISPSoft DVP-ES

1. I SPSoft

COMMR

COMMR



2. I SPSoft

COMMGR

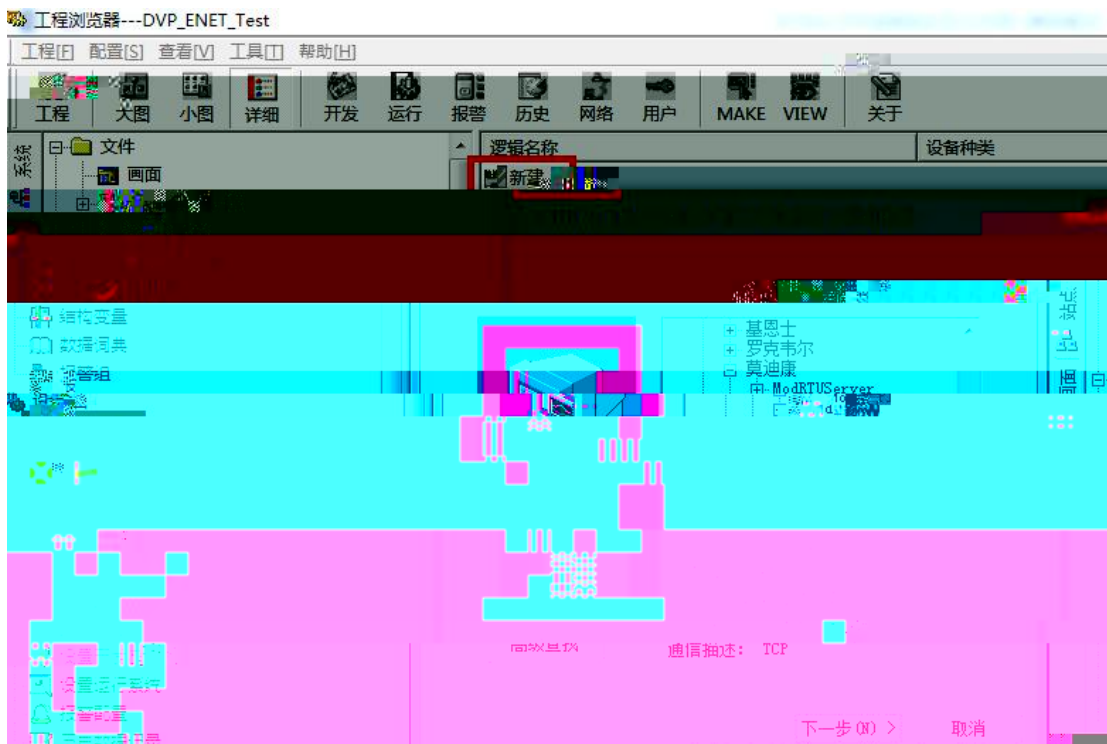
Driver 1



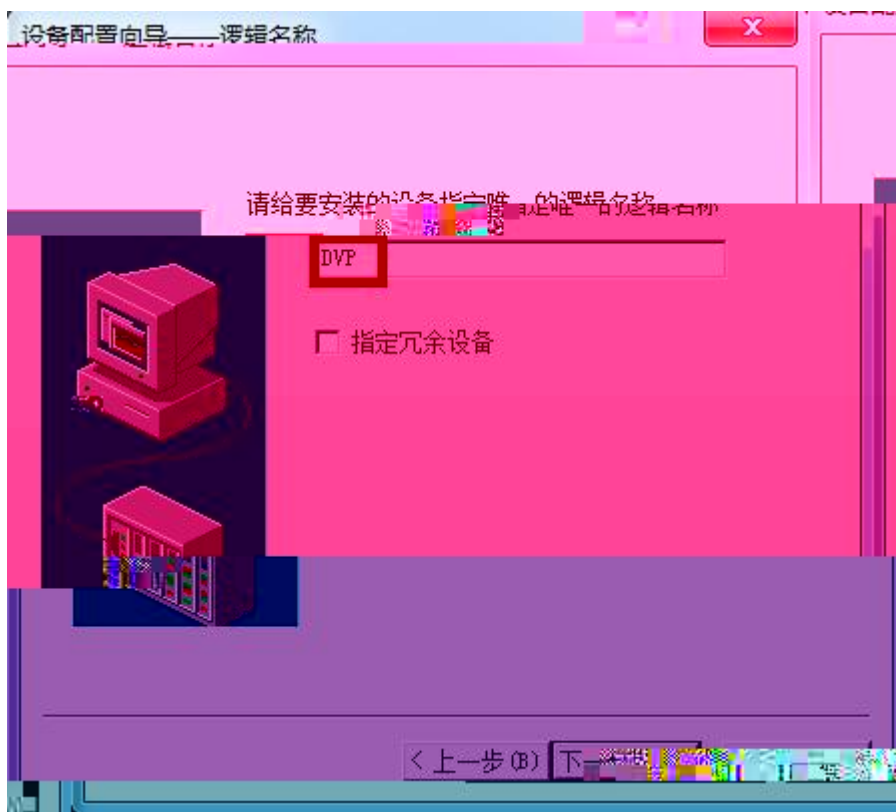
3.

PLC

PLC



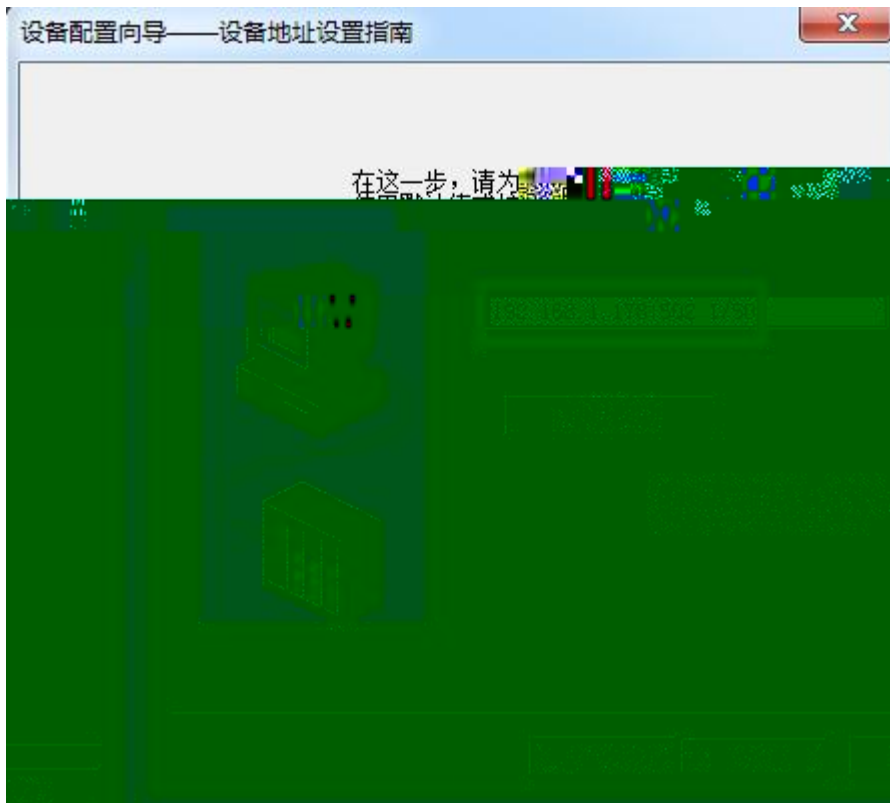
3.



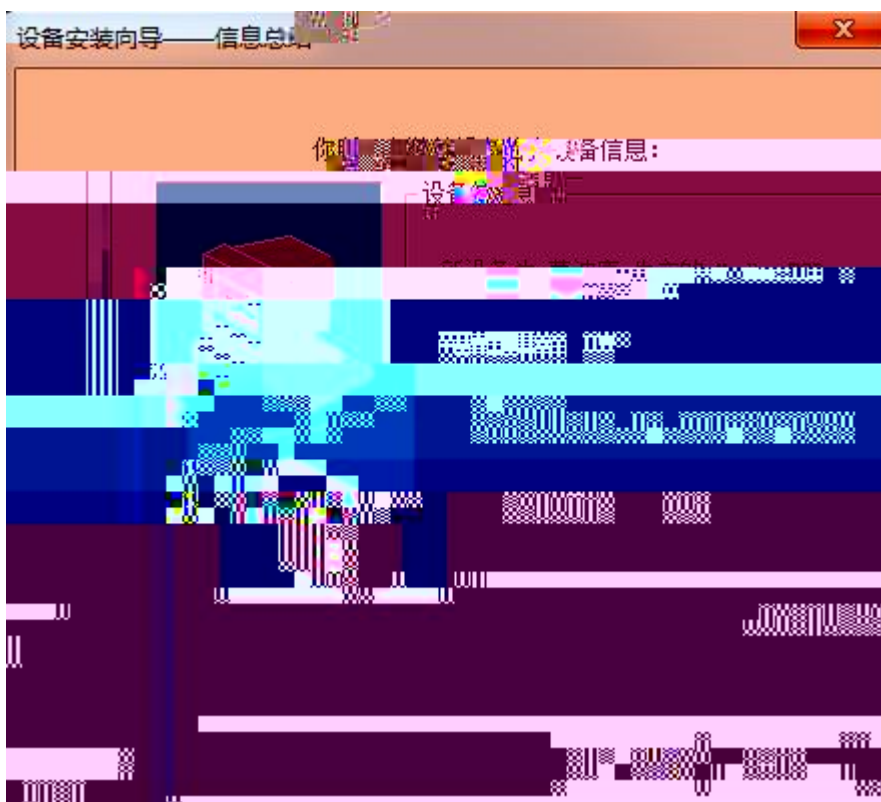
4. RVNet-DVP IP

/

192.168.1.178:502 1/50

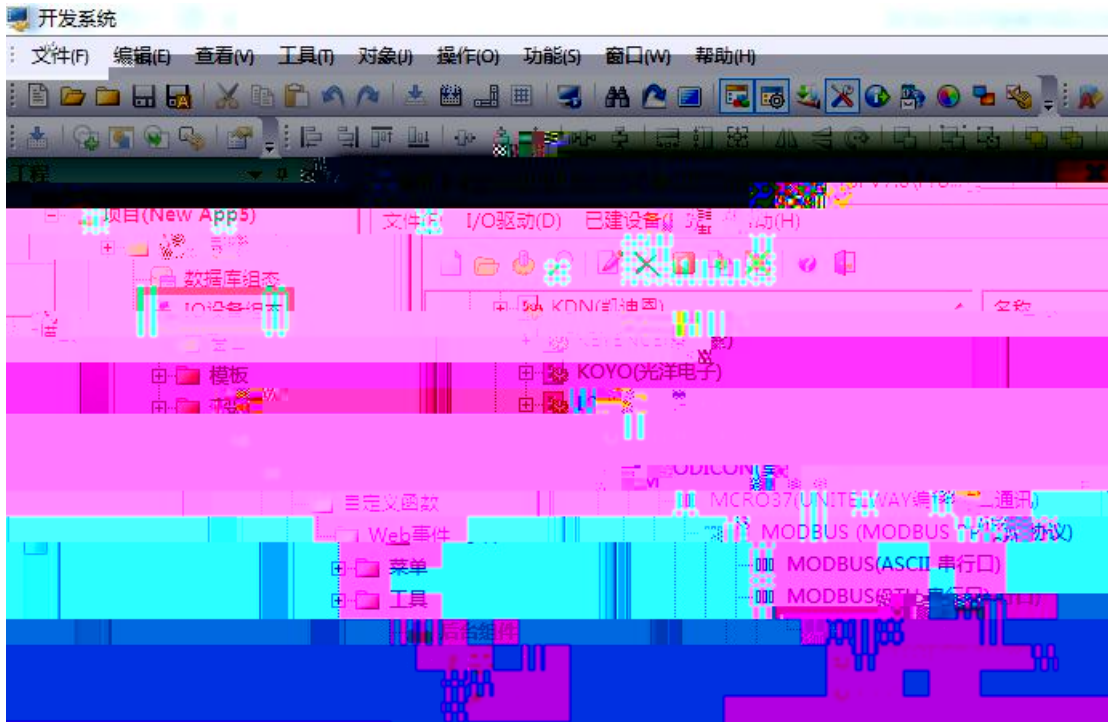


5.



4.3 RVNet-DVP

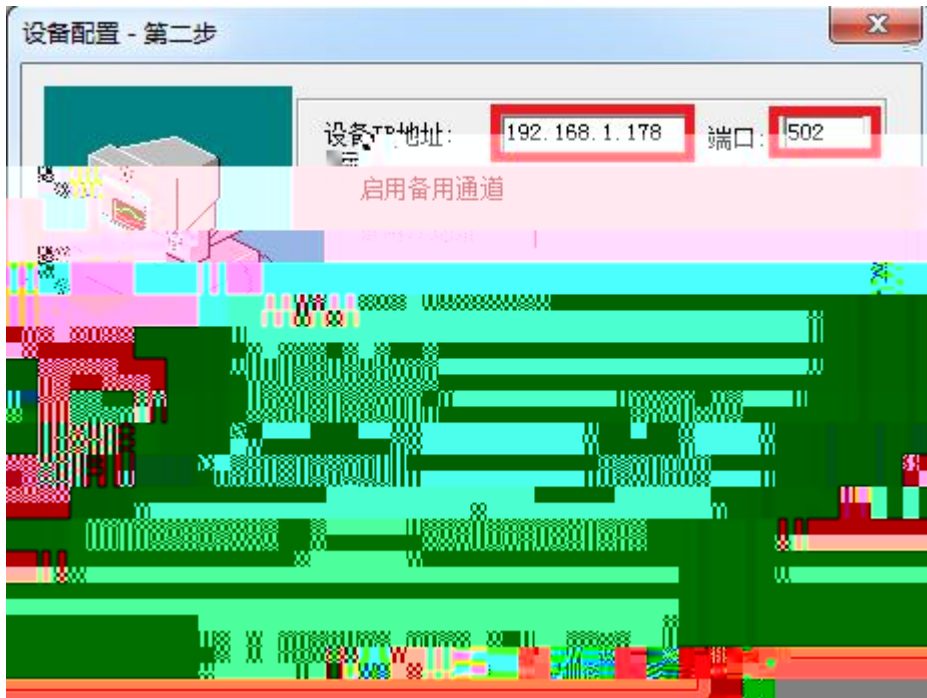
1. " IO " PLC " MODI CON - MODBUS TCP "



2. " " DVP " " 1 " "



3. " IP " RVNet - DVP IP 192.168.1.178 " " 502



4.



4.4 RVNet-DVP

1.

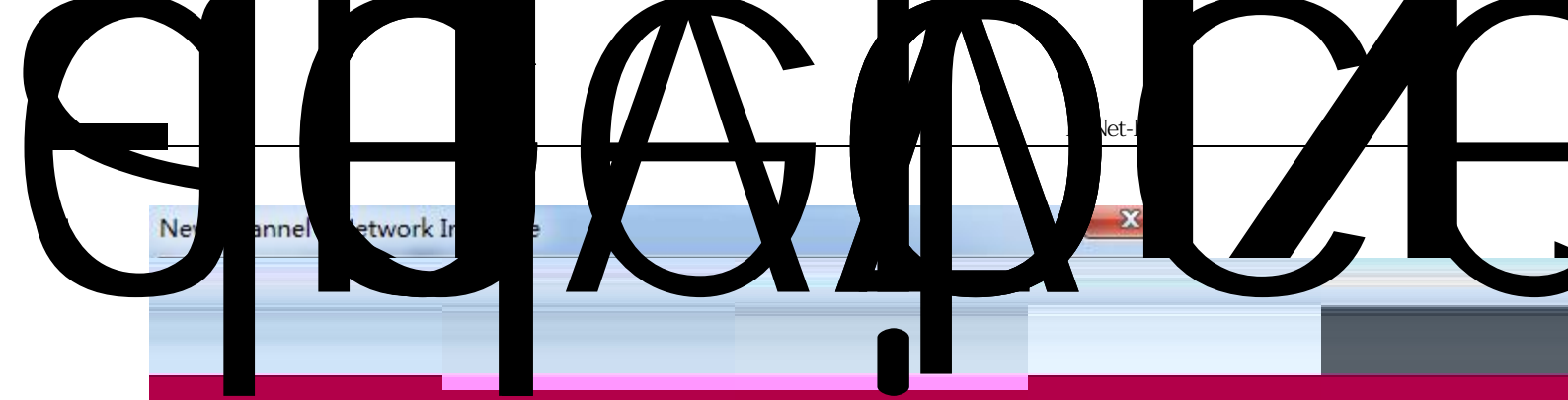


2. " " " " DVP " " 502 "
 IP " RVNet-DVP IP 192.168.1.178 " "



4.5 RVNet-DVP Kepware

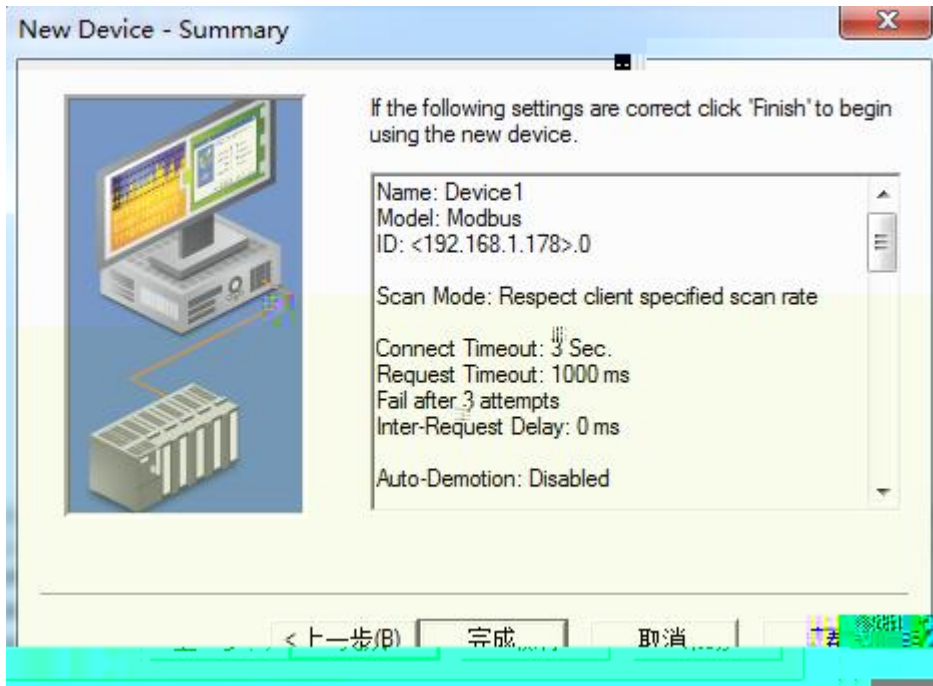
1. KEPServer EX " Click to add a chanm



4. " click to add a device" ,

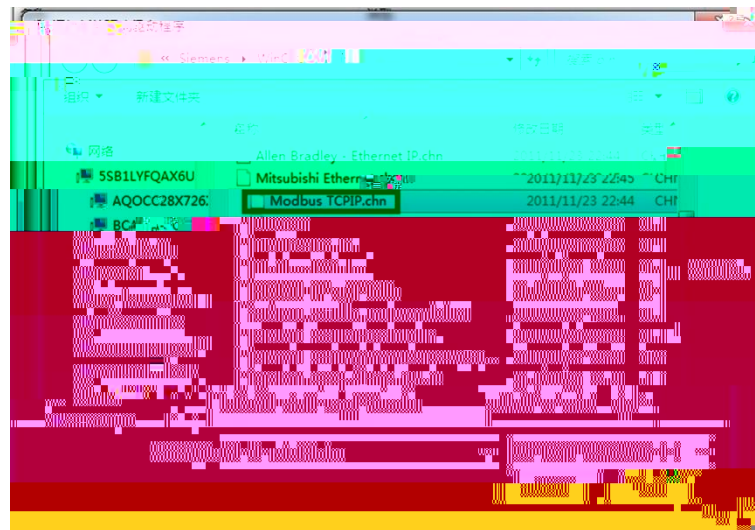
i





4.6 RVNet-DVP

WINCC



" " " " " " "

