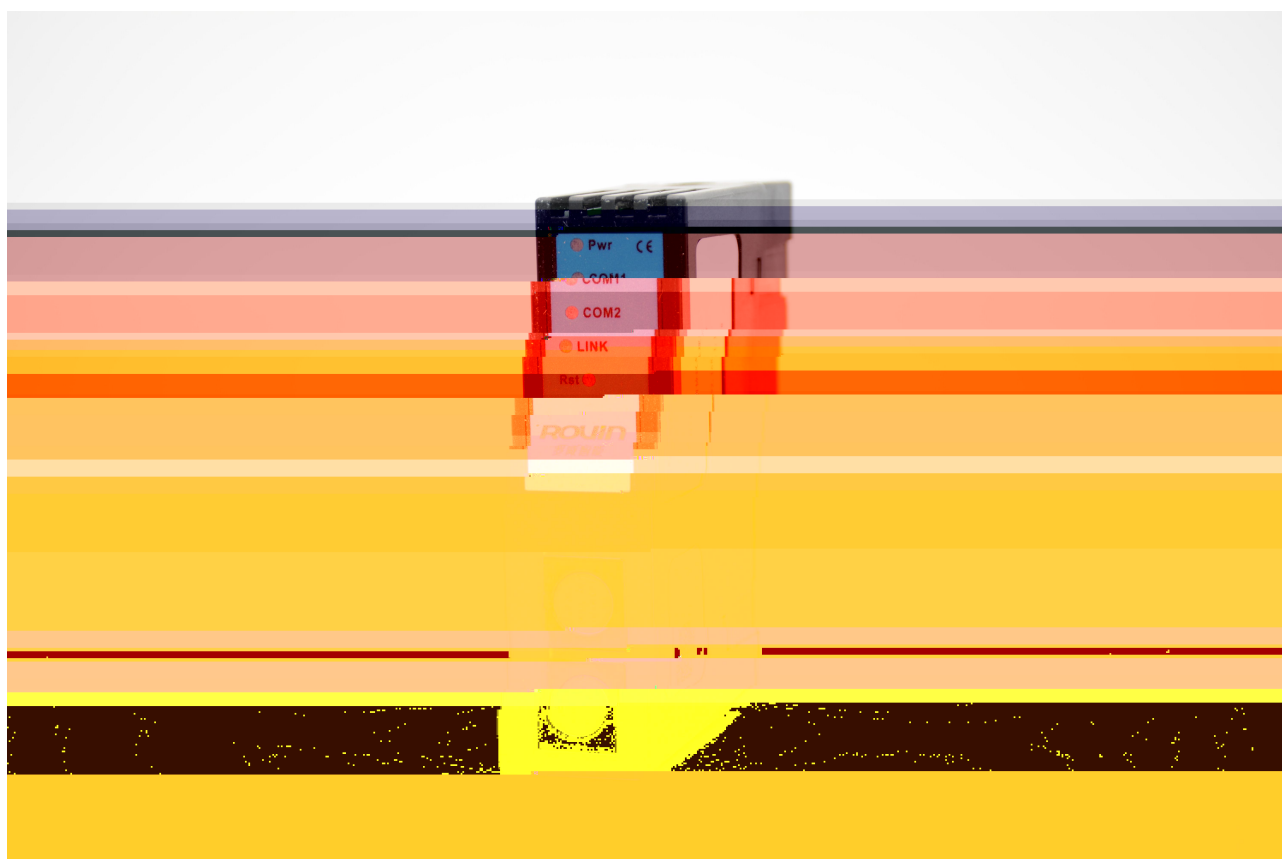

ROUIN

RVNet-DVP

DVP

PLC



1.1

RVNet-DVP

DVP-ES/ES2/EX2/EC3/EH3 DVP-SV2/SS2/SA/SX2 DVP-10PM/20PM

PLC

RVNet-DVP

PLC
X2 PLC

/

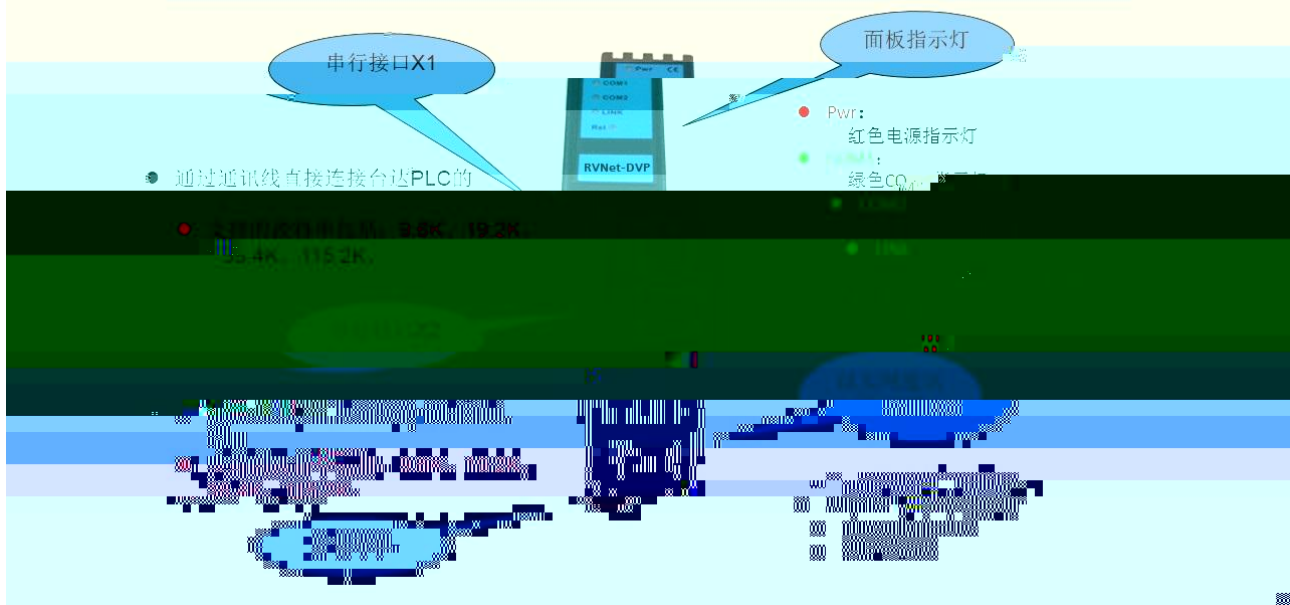
PLC

1.2

1	35mm	COM	DVP	MD8		COM2
	RVNet-DVP	PLC			24VDC	
2	WEB					
3	PLC	HMI				
4		WPLSoft	I	SPSoft		/

2.1

RVNet-DVP产品的硬件和接口图



2.2



2.3

RVNet-DVP
X4

MD8

X1 MD8

X2 RJ45

X3

2.3.1 XI

X1	MD8		PLC
1	—————	5V	
2	—————	5V	
3	—————	GND	
4	—————	TXD	
5	—————	RXD	
6	—————	GND	
7	—————	NC	
8	—————	GND	
X1		9.6k 19.2k 38.4K 115.2k	

2.3.2 X2

X2	MD8	
1	—————	5V
2	—————	5V
3	—————	GND
4	—————	RXD
5	—————	TXD
6	—————	GND
7	—————	NC
8	—————	GND
X2		9.6k 19.2k 38.4K 115.2k

2.3.3 X3

	RJ45		
1	—————	TX+	
2	—————	TX-	
3	—————	RX+	
6	—————	RX-	
	Link	Active	10/100M
T568B			T568A/

2.3.4 24VDC X4

X4	RVNet-DVP	24VDC	24VDC±20%/100mA
----	-----------	-------	-----------------

24VDC

24

RVNet-DVP

LED

RVAr

COM1

COM

LINK

COM1 b

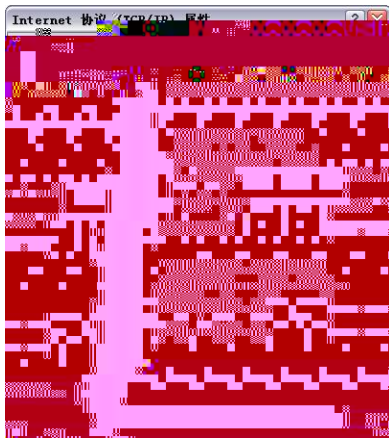
COM1 b-key

COM1 c

RVNet-DVP

R

"



Internet Explorer

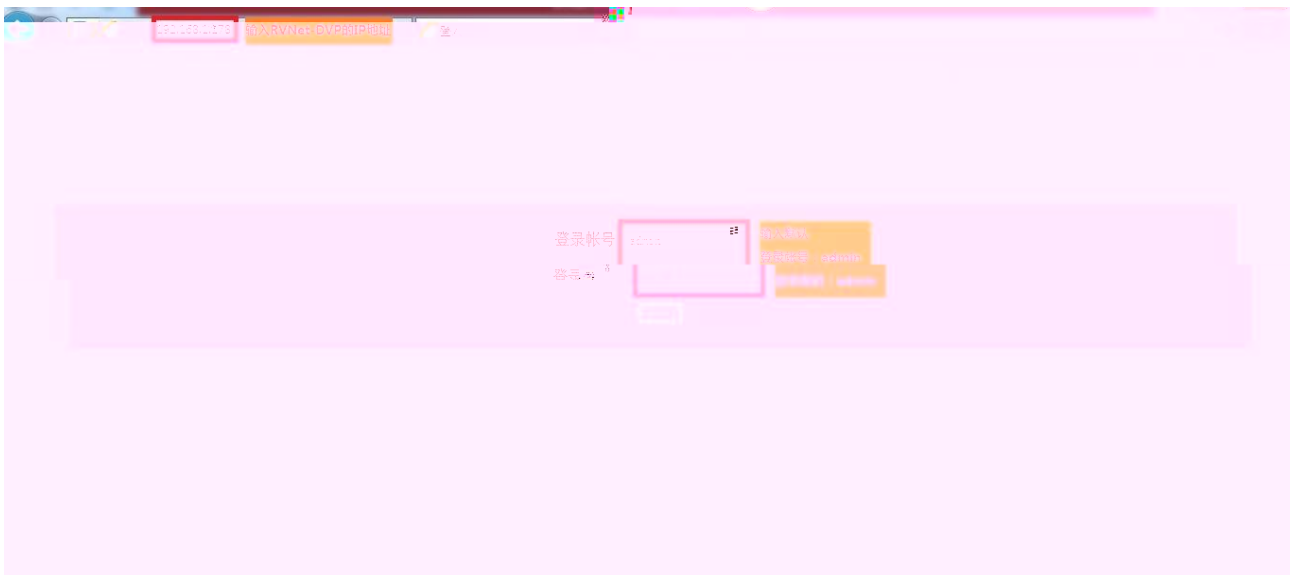
RVNet-DVP

192.168.1.178

Web .

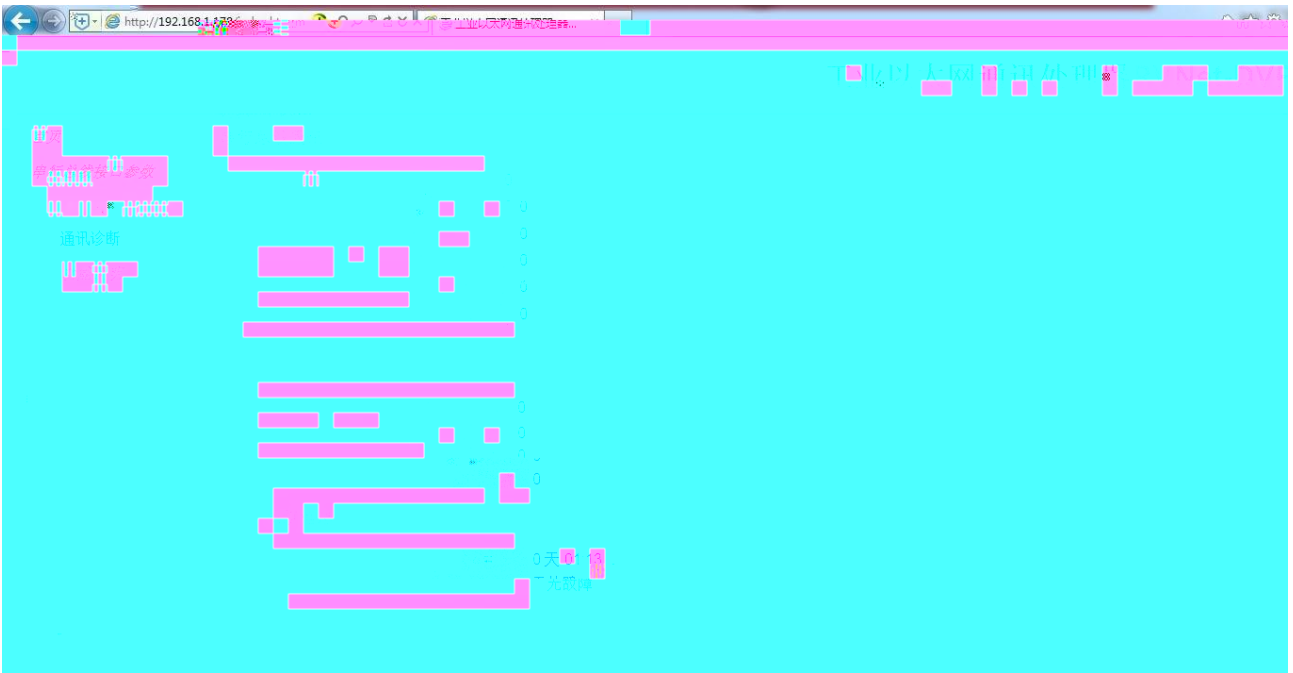
RVNet-DVP

IP





3.2.3



COM1—

PLC

PLC
PLC

COM2—

TCP/IP—

TCP

S7TCP
RVNet-DVP
RVNet-DVP

TCP/IP

RVNet - DVP

SCADA

ModbusTCP

RVNet - DVP

ModbusTCP

ModbusTCP

ModbusTCP

OPC

PLC

ModbusTCP

DVP

PLC

Modbus

PLC

FC1

FC2 FC3 FC5 FC6

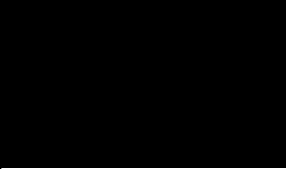
FC16

LC

Modbus

0x0	0x0	0x0	0x0	0x0								

1



PLC Modbus Modbus Modbus

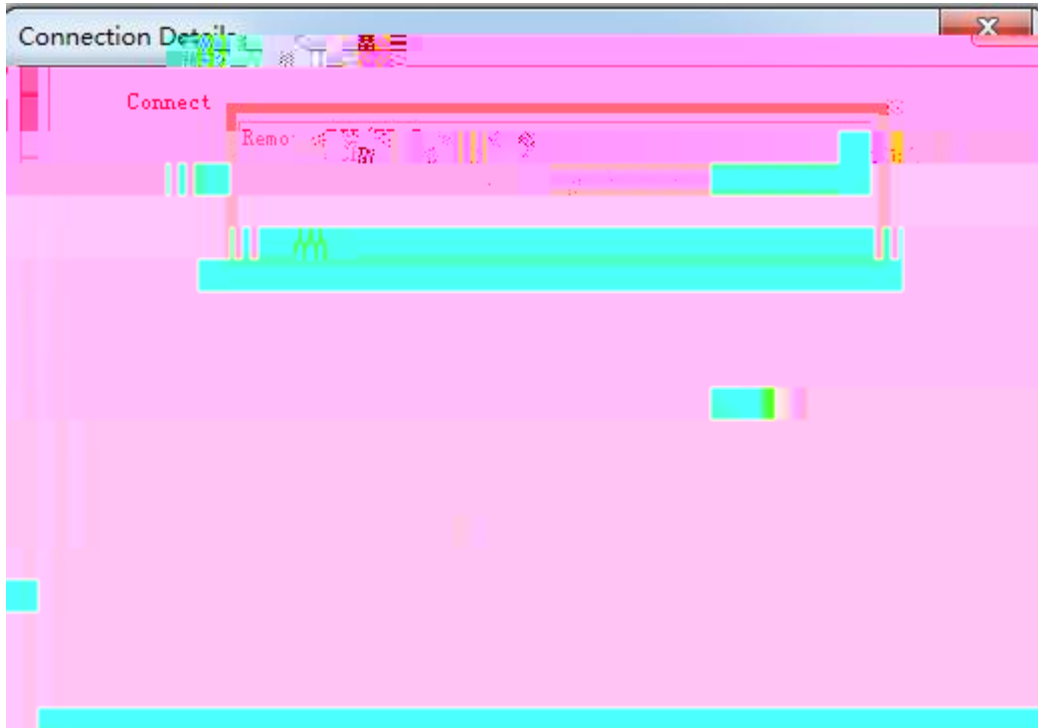
2 ModScan32

modscan2_cr.rar

11

1. ModScan32

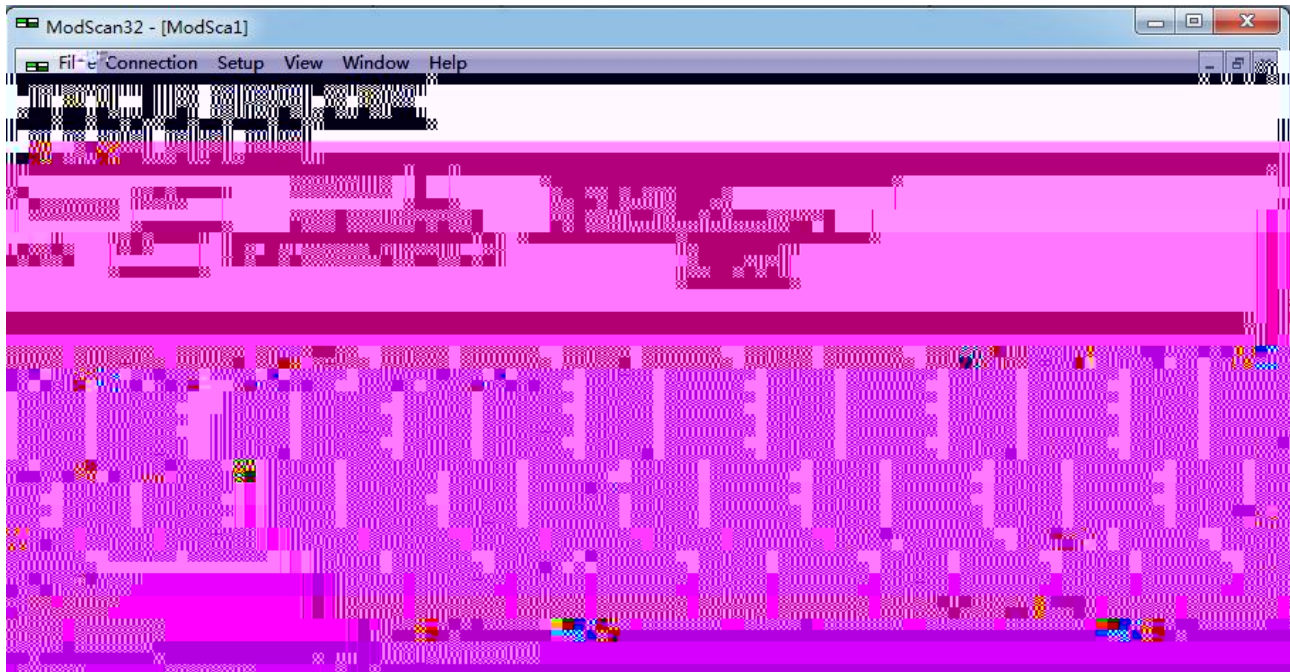
2. Connection/Connect Remote TCP/IP Server RVNet-DVP IP Service
502 [OK] 1



1

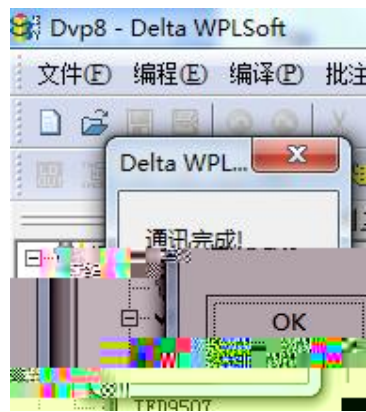
3. "ModSca1" Device ID PLC 1 03: HOLDING REGISTER
Address = 0001 Length = 100

4. 404097 404196 16 DVP PLC D0 D100
2

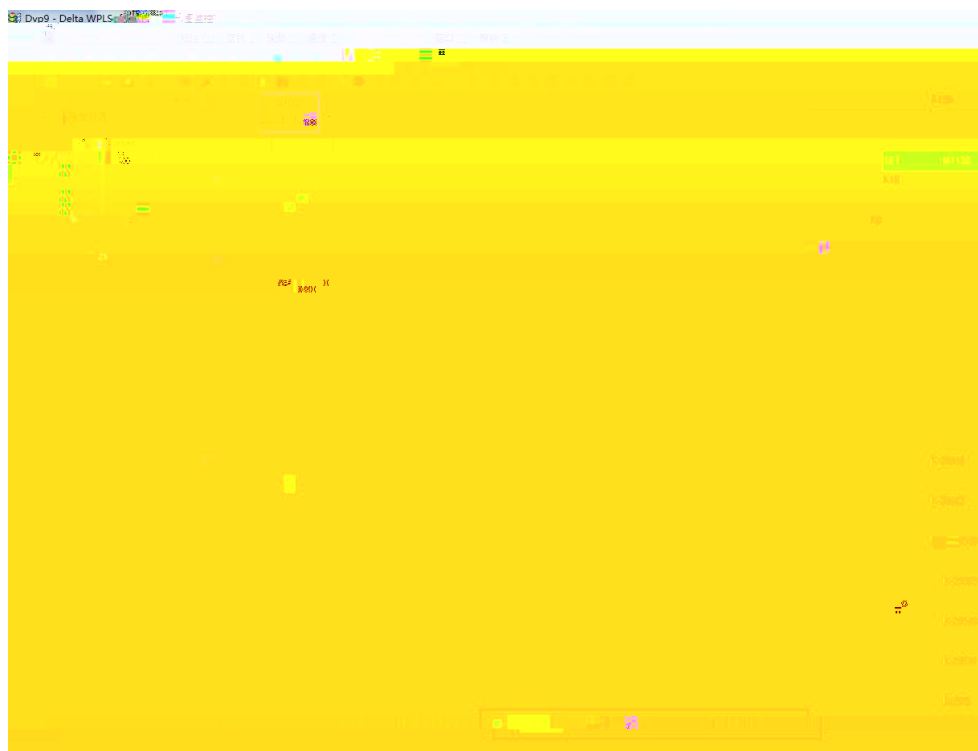




2.



4.



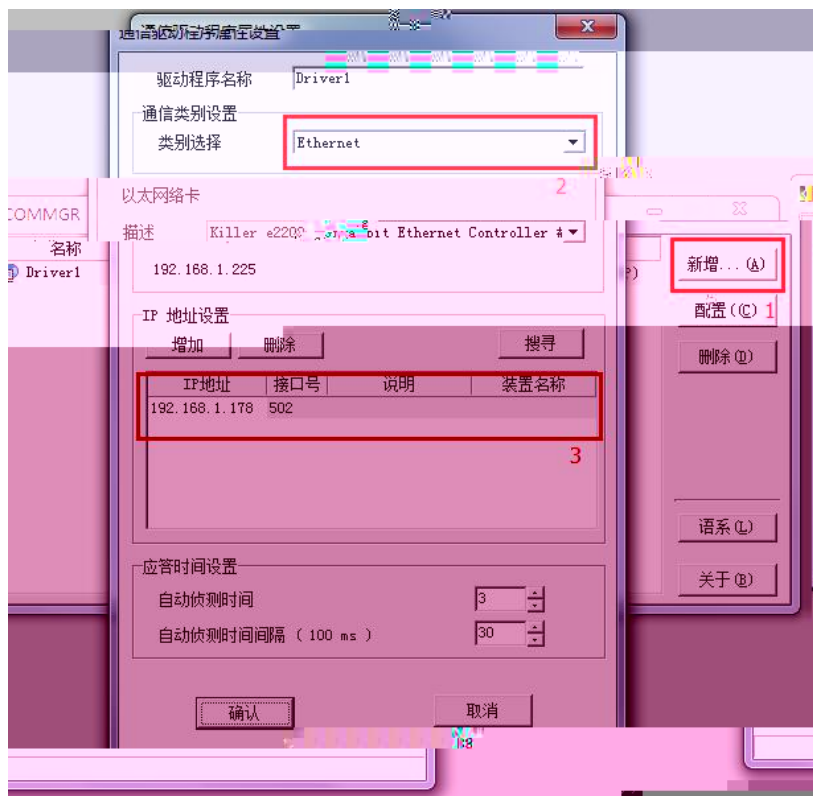
4.1.2

ISPSoft DVP-ES

1. I SPSoft

COMGR

COMGR



2. I SPSoft

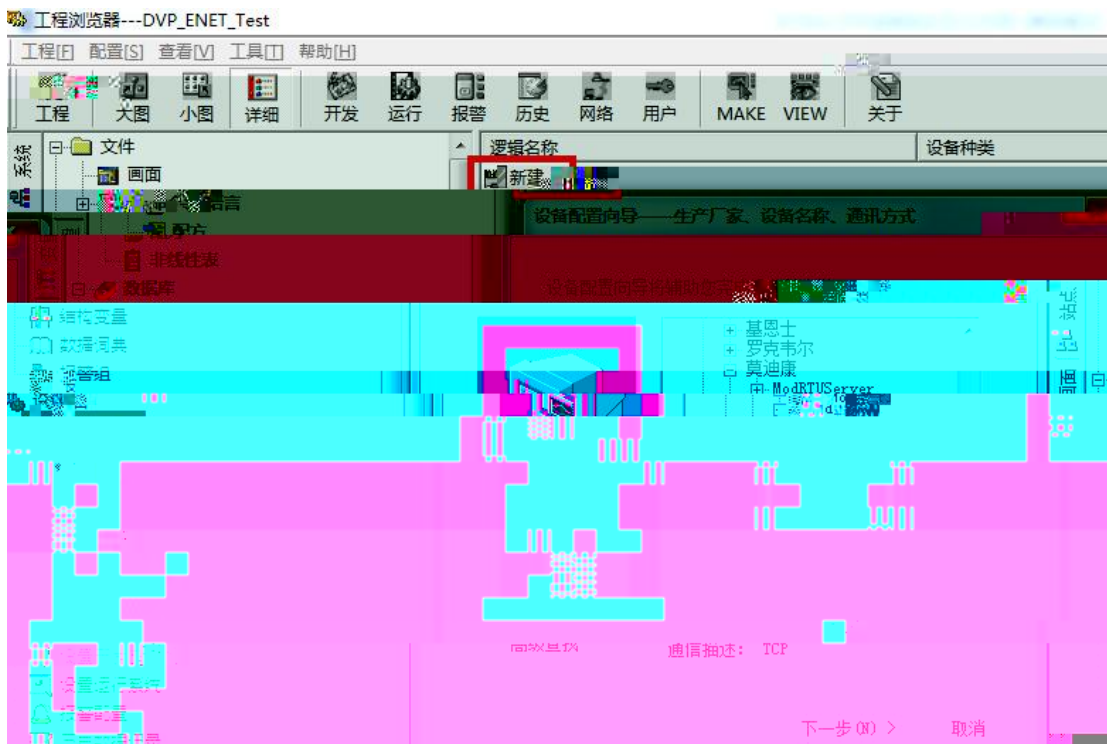
COMGR

Driver 1

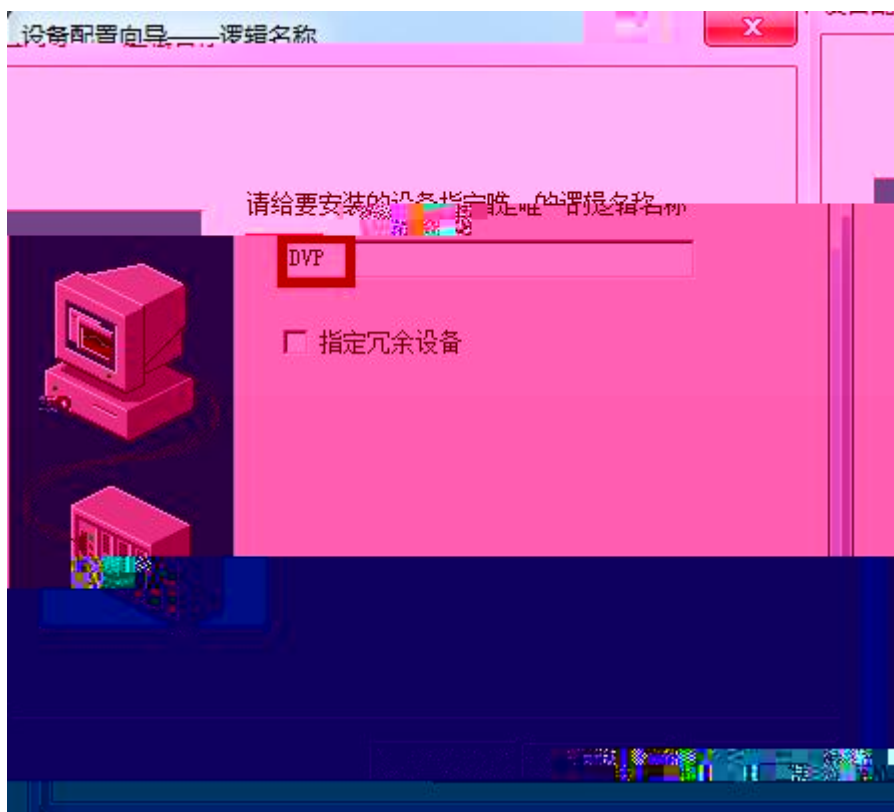


3. PLC

PLC



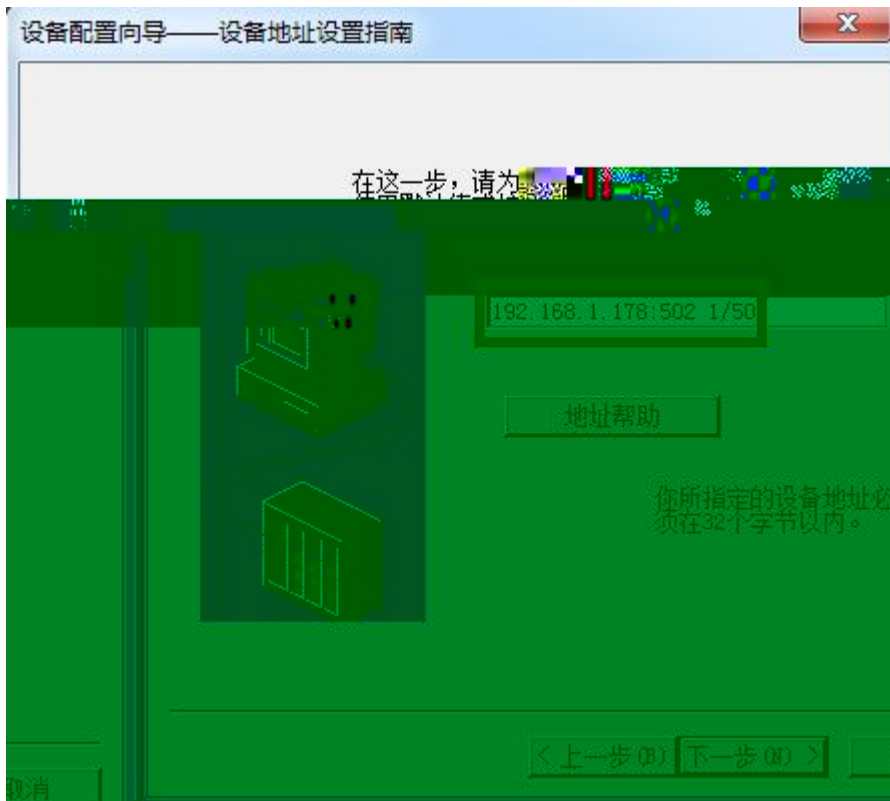
3.



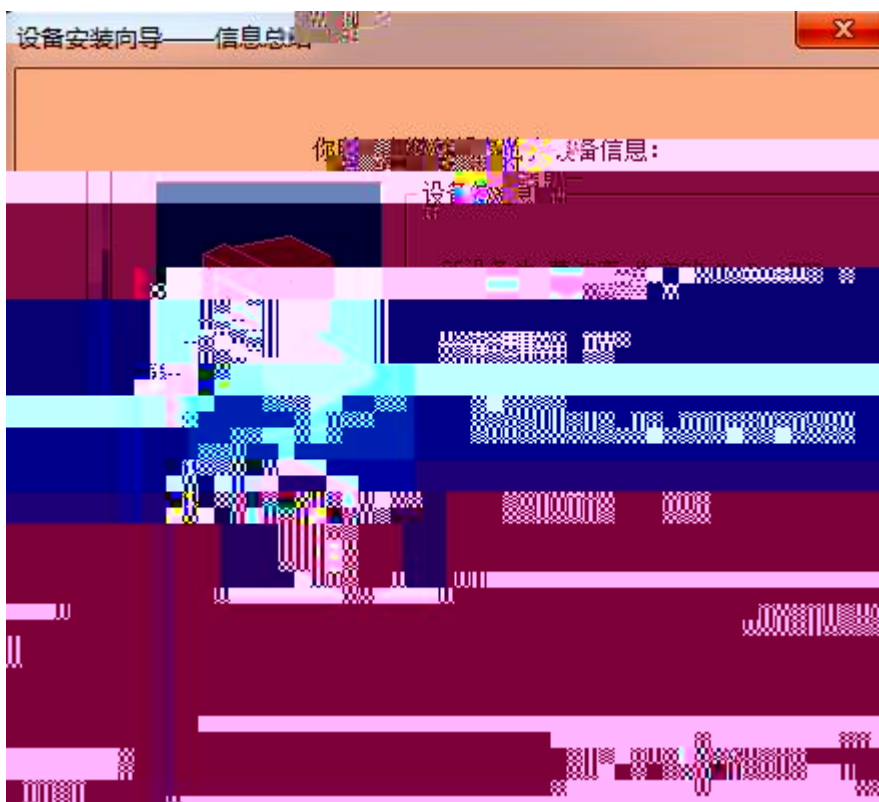
4. RVNet-DVP IP

/

192.168.1.178:502 1/50

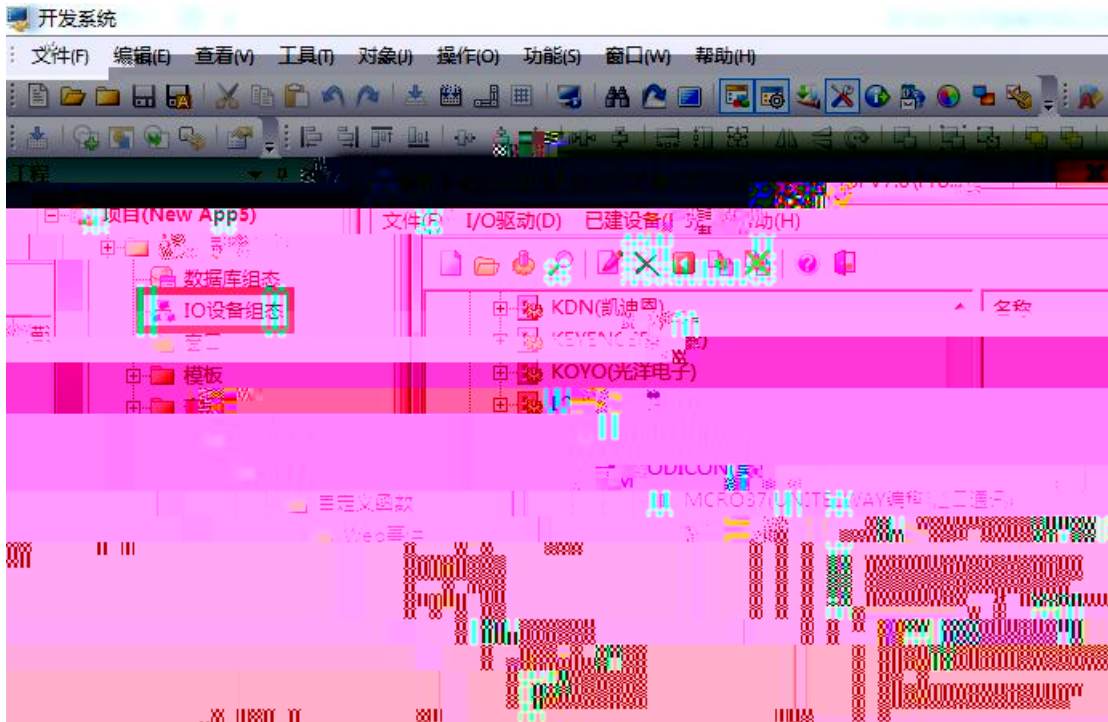


5.



4.3 RVNet-DVP

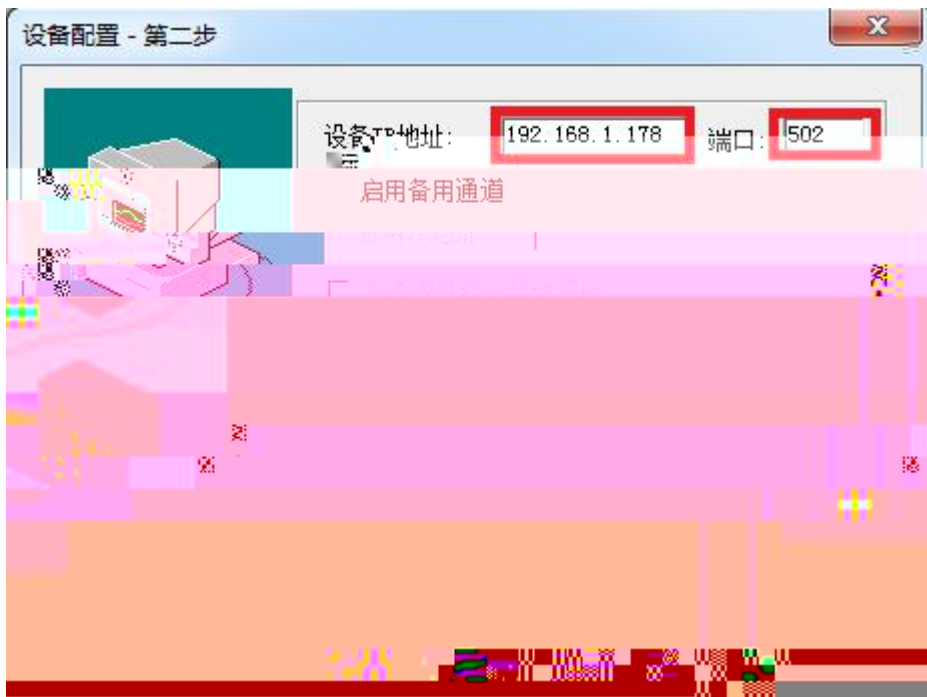
1. " IO " PLC " MODI CON -MODBUS TCP "



2. " " DVP " " 1 " "



3. " IP " RVNet-DVP IP 192.168.1.178 " " 502

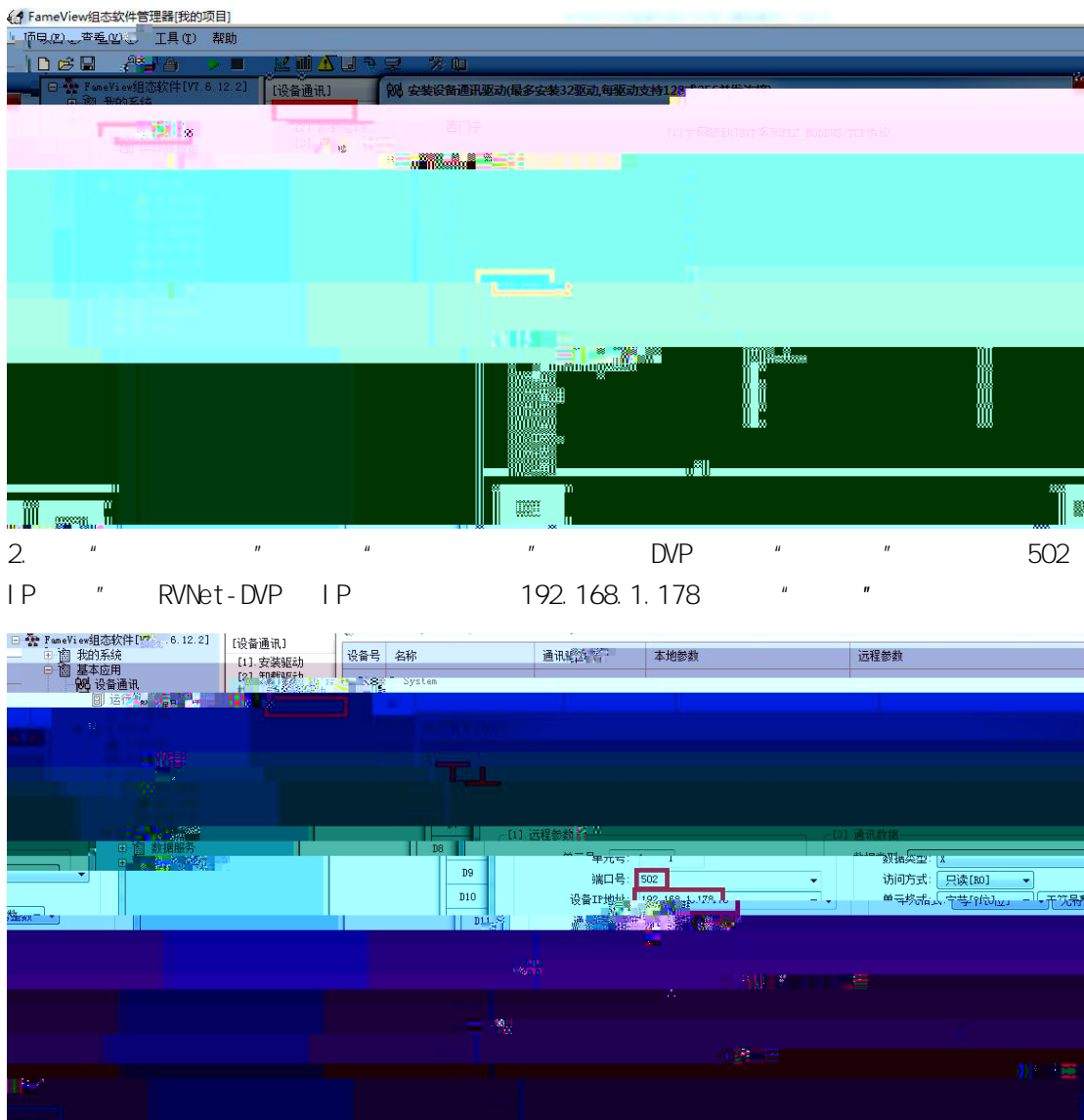


4.



4.4 RVNet-DVP

1.

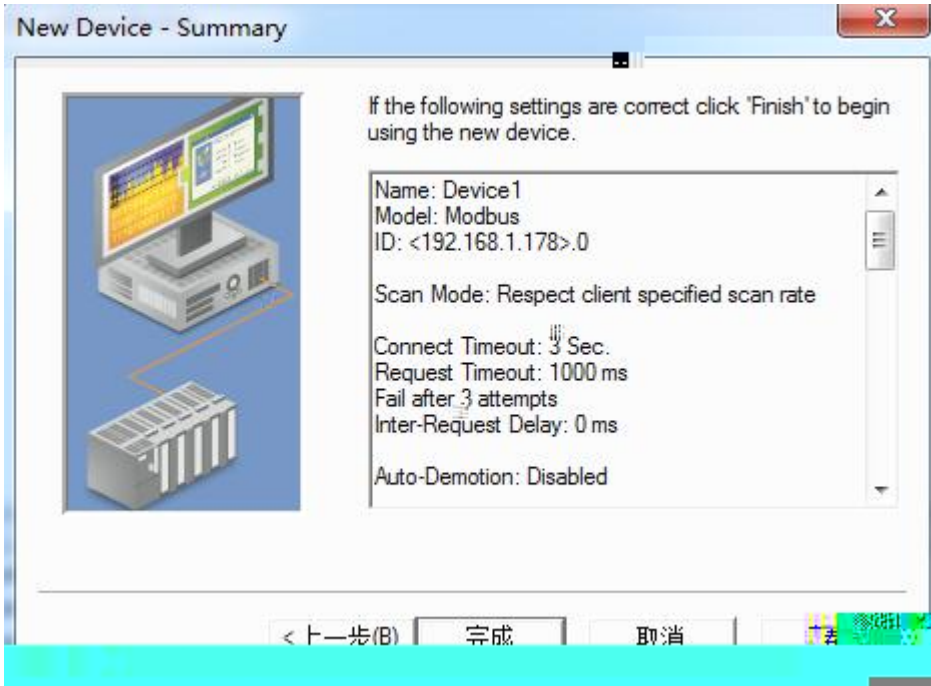


4.5 RVNet-DVP Keware

1. KEPServer EX " Click to add a chanm



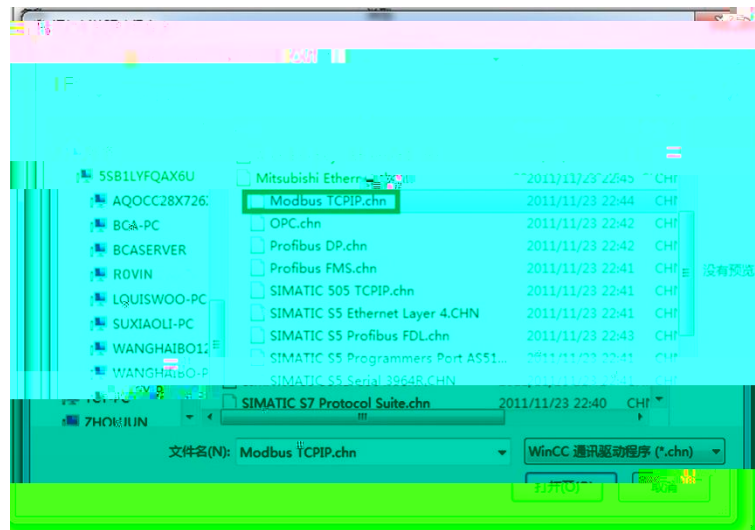
4. " click to add a device" , i



4.6 RVNet-DVP

WINCC

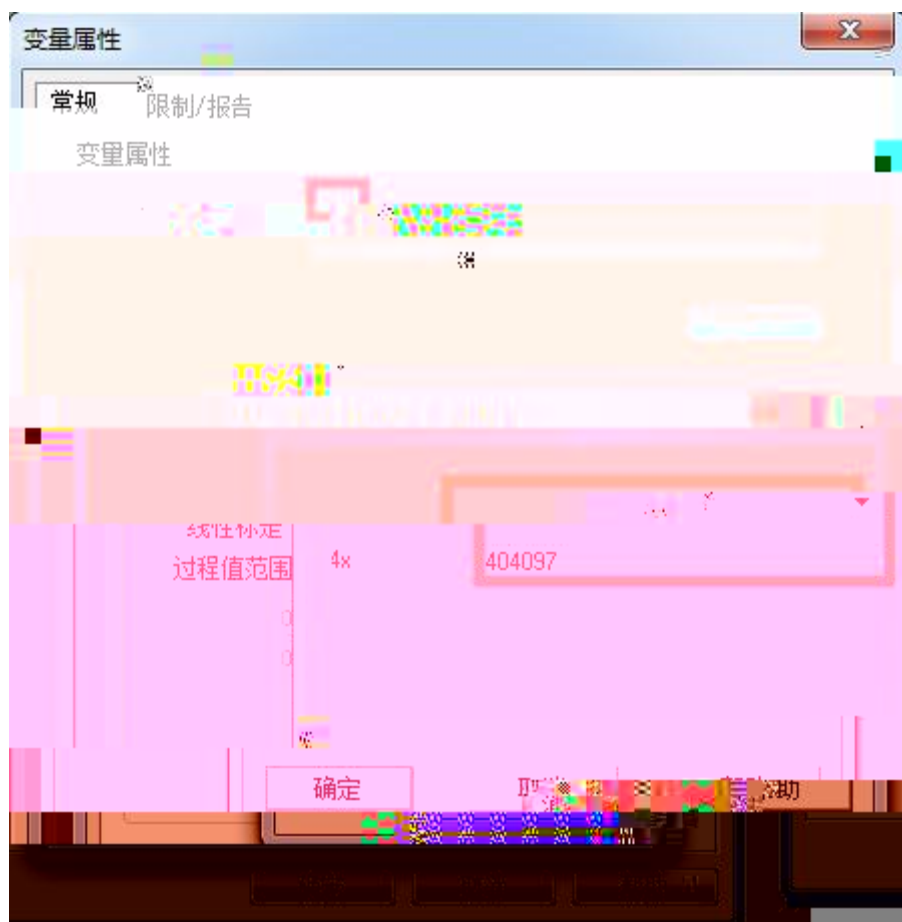
1. Wincc
“Modbus TCP/IP.chn”



2. “Modbus TCP/IP #1” “ ” “ ”
“ CPU ” “ 984” “ ” RVNet-DVP IP “ ” 502 ”
“ PLC ” 1



3. “ ” DO “ ”
 “ ” “4x” “4x” “404097”, plc DO



2755

250101

0531-88689022

0531-88689022

111

266107

0532-68894021 83029299

0532-83029299

18753243991 garywei@dingtalk.com

www.roviniot.com

